

KEY

**PROPOSED
NO WAITING AT ANY TIME**

**EXISTING WAITING, LOADING
AND PARKING RESTRICTIONS
(WITH OR WITHOUT SYMBOLS)**



Notes

Rev.	Description	Drwn	Sig.	Date	Chkd	Sig.	Date	Appr	Sig.	Date
A	SYMBOLS ADDED TO RESTRICTIONS	SDC	SDC	23.01.08	TPC	TPC	23.01.08	TPC	TPC	23.01.08
B	RESTRICTIONS AMENDED	CAH	CAH	09.11	JAR	JAR	09.11	TPC	TPC	09.11
C	RESTRICTIONS AMENDED	CAH	CAH	09.11	JAR	JAR	09.11	TPC	TPC	09.11

Drwn	Sig.	Date	Chkd	Sig.	Date	Appr	Sig.	Date
SDC	SDC	23.01.08	TPC	TPC	23.01.08	TPC	TPC	23.01.08
CAH	CAH	09.11	JAR	JAR	09.11	TPC	TPC	09.11
CAH	CAH	09.11	JAR	JAR	09.11	TPC	TPC	09.11

North Point

Based upon the Ordnance Survey mapping with the permission of the Controller of Her Majesty's Stationary Office. Crown copyright. Unauthorised reproduction infringes Crown copyright and may lead to prosecution or other proceedings. Surrey County Council LA 075872 1996.

Drawn by	SDC	Sig.	SDC	Date	03.07
Checked by	TPC	Sig.	TPC	Date	03.07
Approved by	TPC	Sig.	TPC	Date	03.07

Project

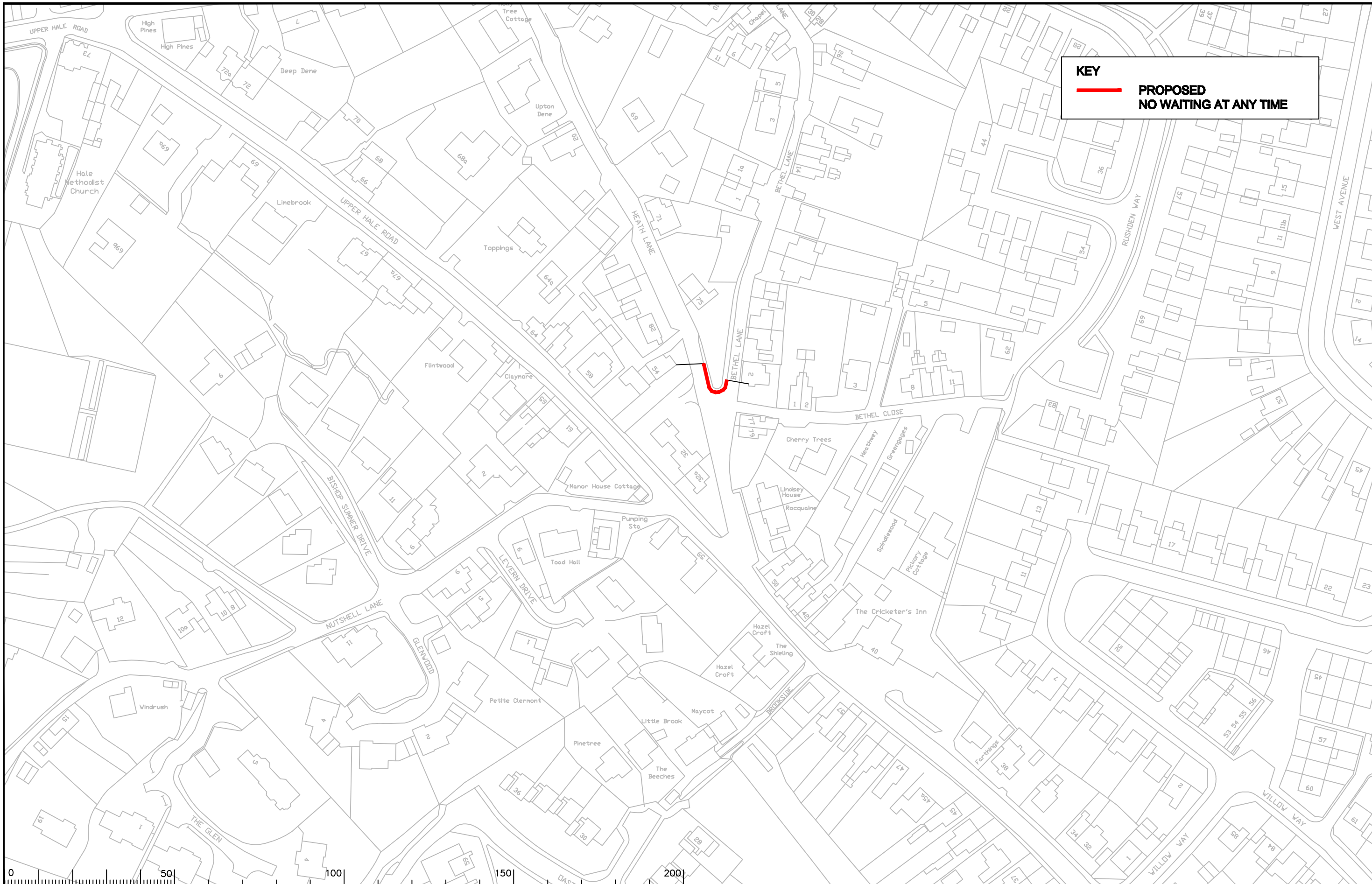
**WAVERLEY DPE
HEATH END AND WEYBOURNE**


IMPLEMENTED TRAFFIC ORDERS

SHEET OF

SURREY COUNTY COUNCIL
Sustainable Development

Project No. 3282/WAV
Contract Sheet No. 24.011
Drawing No. 24.011
Rev. C
Classification
ADVERTISED



KEY
 **PROPOSED**
NO WAITING AT ANY TIME




Notes

Rev.	Description	Drwn	Sig.	Date	Chkd	Sig.	Date	Appr	Sig.	Date

Rev.	Description	Drwn	Sig.	Date	Chkd	Sig.	Date	Appr	Sig.	Date

North Point



Drawn by	CAH	Sig.	CAH	Date	09.11
Checked by	JAR	Sig.	JAR	Date	09.11
Approved by	TPC	Sig.	TPC	Date	09.11

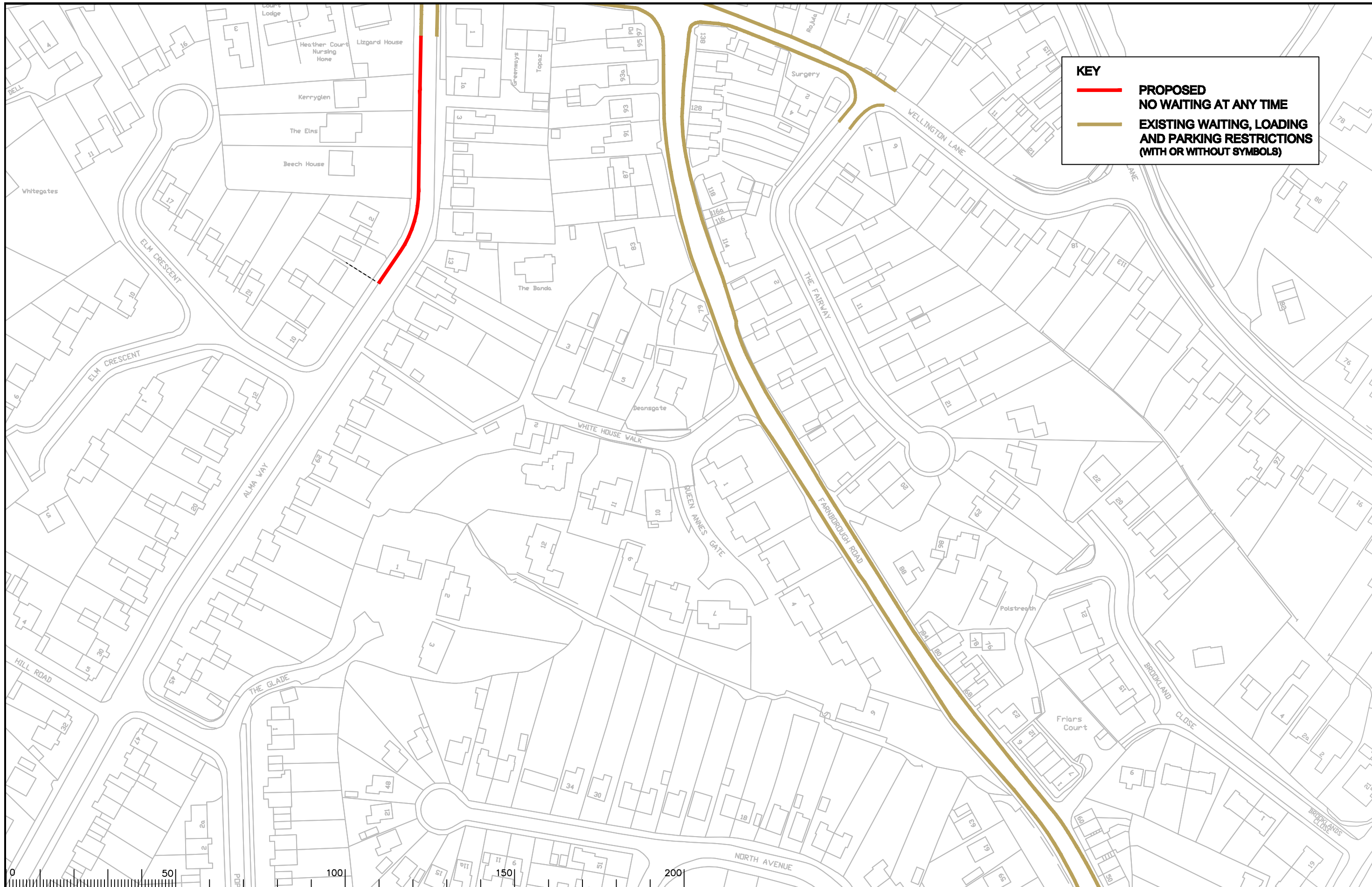
Project
WAVERLEY DPE
HEATH END AND WEYBOURNE
 Drawing
IMPLEMENTED TRAFFIC ORDERS




SURREY
 COUNTY COUNCIL
 Sustainable Development
 Head of Transportation
 2nd Floor, City Hall, Westgate Road, Guildford, Surrey GU1 2EG


Project No.	3282/WAV
Contract Sheet No.	24.119
Rev.	-
Classification	ADVERTISED

SHEET OF



KEY

 **PROPOSED
NO WAITING AT ANY TIME**

 **EXISTING WAITING, LOADING
AND PARKING RESTRICTIONS
(WITH OR WITHOUT SYMBOLS)**




Notes

Rev.	Description	Drwn	Sig.	Date	Chkd	Sig.	Date	Appr	Sig.	Date
A	RESTRICTIONS AMENDED	CAH	CAH	09.11	JAR	JAR	09.11	TPC	TPC	09.11

Drwn	Sig.	Date	Chkd	Sig.	Date	Appr	Sig.	Date
CAH	CAH	09.11	JAR	JAR	09.11	TPC	TPC	09.11

North Point




Based upon the Ordnance Survey mapping with the permission of the Controller of Her Majesty's Stationary Office © Crown copyright. Unauthorised reproduction infringes Crown copyright and may lead to prosecution or other proceedings. Surrey County Council LA 075872 1996.

Drawn by	Sig.	Date
SDC	SDC	03.07
Checked by	Sig.	Date
TPC	TPC	03.07
Approved by	Sig.	Date
TPC	TPC	03.07

Project
**WAVERLEY DPE
HEATH END AND WEYBOURNE**

Drawing
IMPLEMENTED TRAFFIC ORDERS

SHEET OF



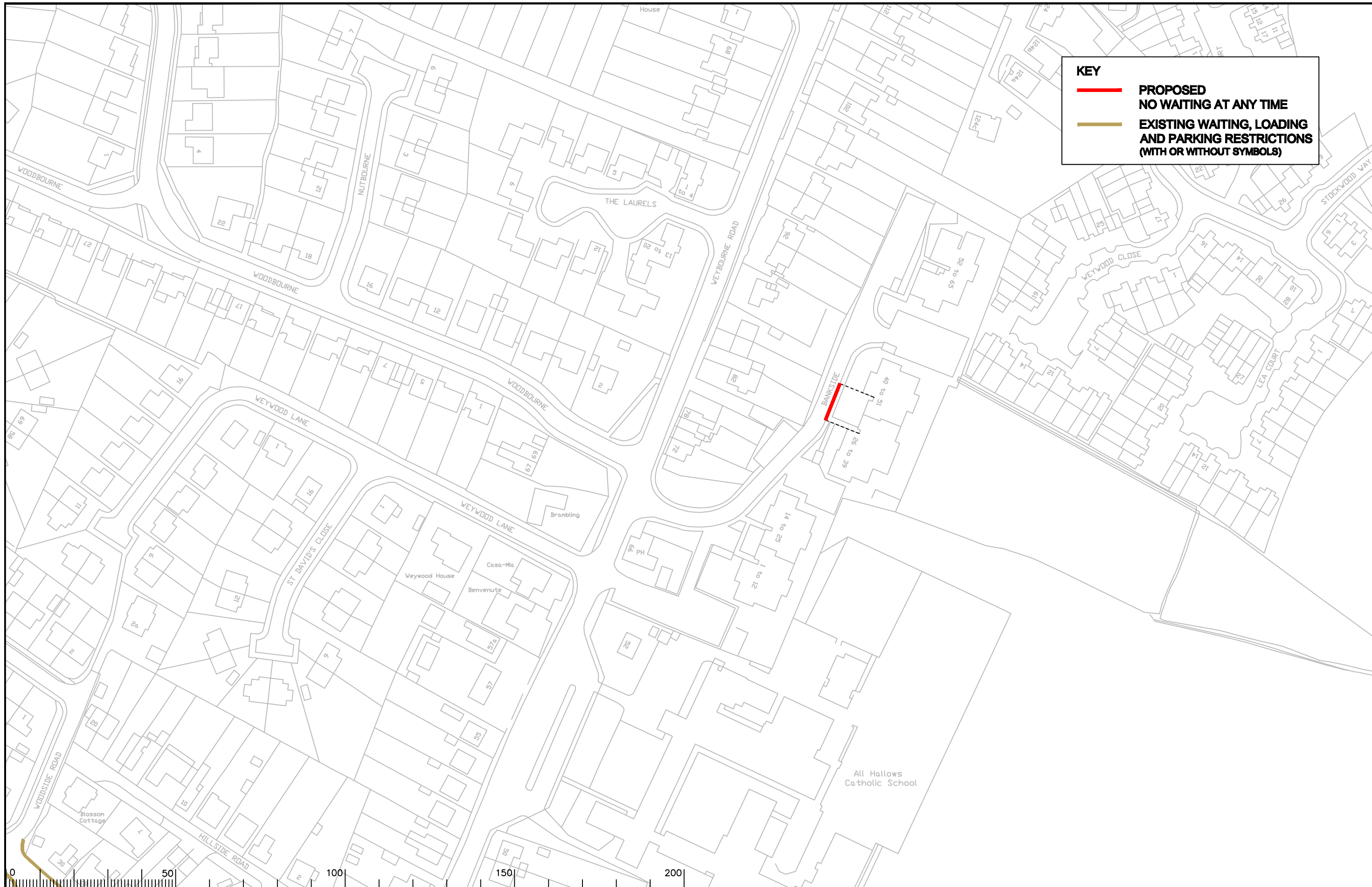
**SURREY
COUNTY COUNCIL**
Sustainable Development
Head of Transportation
24.04.04
24.04.04

Project No.
3282/WAV

Contract Sheet No.
24004

Rev.
A

Classification
ADVERTISED



KEY

**PROPOSED
NO WAITING AT ANY TIME**

**EXISTING WAITING, LOADING
AND PARKING RESTRICTIONS
(WITH OR WITHOUT SYMBOLS)**

Notes

Rev.	Description	Drwn	Sig.	Date	Chkd	Sig.	Date	Appr	Sig.	Date

North Point

Drawn by CAH Sig. CAH Date 09.11
 Checked by JAR Sig. JAR Date 09.11
 Approved by TPC Sig. TPC Date 09.11

Project
**WAYERLEY DPE
HEATH END AND WEYBOURNE**

Drawing
IMPLEMENTED TRAFFIC ORDERS

**SURREY
COUNTY COUNCIL**
Sustainable Development

Project No. 3282/WAV
 Contract Sheet No. 24126
 Drawing No. 24126
 Rev. -
 Classification ADVERTISED